

Ueli Grüninger, Executive Director, Swiss College of Primary Care Medicine, Berne, Switzerland

The Wonca Tree



This Wonca tree is a visualization of the definitions of primary medicine set down by Wonca Europe.

The basic principles, core competencies and attributes of the family physician set down by Wonca Europe in its "definitions of primary medicine" also define the goals to be achieved by family physicians, in their role as primary care providers, in the healthcare system.

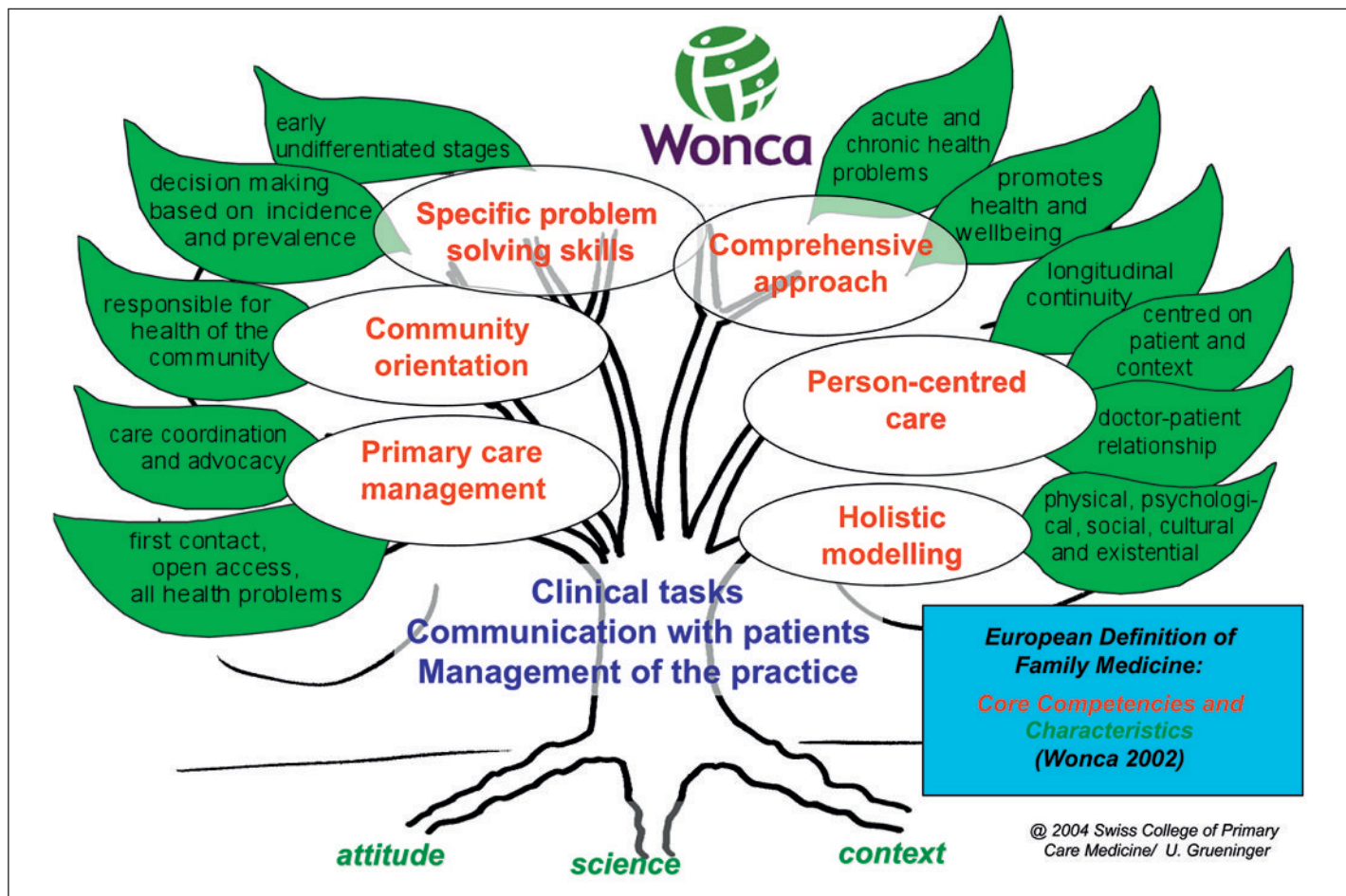
I like to think of the Wonca concept of primary care as a large tree. The main clinical tasks, patient-doctor communication, and practice management make up the strong trunk. The tree has strong roots, too: science, a professional approach and the healthcare context. The numerous branches represent the many different core competencies and attributes of the work of family physicians. When we look at this tree, we realize immediately how closely the areas of primary care and family medicine are linked to the provi-

sion of healthcare, the healthcare system and public health. Many of the core competencies extend into these sectors. It is now up to us to breathe life into this concept so that the branches bear leaves and fruit!

This text is taken from the article «Braucht es den Hausarzt noch?» (Do we still need family physicians?); <http://www.primary-care.ch/pdf/2005/2005-03/2005-03-466.PDF>, in which the Wonca Tree was presented for the first time.

Correspondence:
 Dr. Ueli Grüninger
 Executive Director, Swiss College of Primary Care Medicine
 Landhausweg 26
 CH-3007 Bern
 ueli.grueninger@hin.ch

The Wonca Tree can be downloaded in PDF format from the website of the Swiss College of Primary Care Medicine: www.kollegium.ch/medical/cm/wonca_tree_dfe_def_highQ.pdf



© 2004 Swiss College of Primary Care Medicine/ U. Grueninger